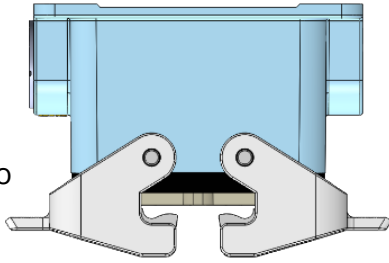


# TOOL CHANGE QUICK DISCONNECT SOLUTION

- Plug and Play solution for quick disconnect wiring of tool packages with Module Controllers on the tool -

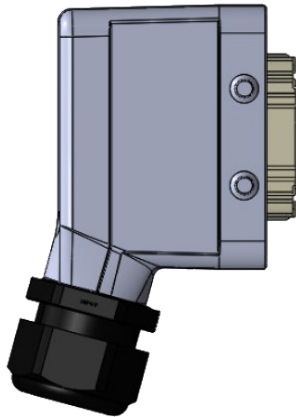
## DOCKING CONNECTOR

- Optional
- Secure location to dock Machine Side Connector during tool change
- Provides feedback to machine to confirm connector is docked



## MACHINE-SIDE CONNECTOR

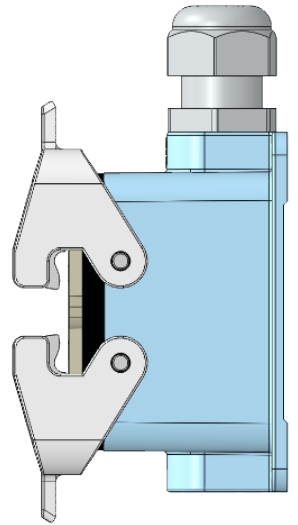
- 10-pin connector
- Side Entry hood that can be configured to have cables exit either side
- 5m communication cable exiting to connect to System Controller
- 5m multiconductor cable exiting to terminate to machine power
- Multiconductor pinout:



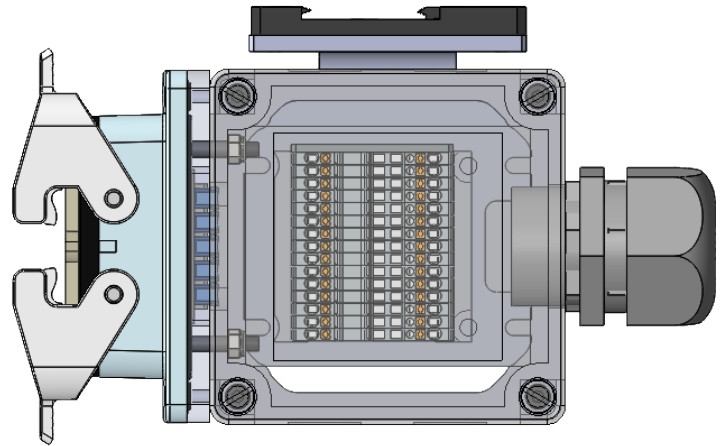
MULTICONDUCTOR CABLE	TERMINATION
1	NEUTRAL (FOR 120VAC)
2	ENABLE
3	24 VDC
4	OPTIONAL: CONNECTOR DOCK SIGNAL
5	120 VAC
6	<i>Cut - not used</i>
7	OPTIONAL: CONNECTED TO TOOL SIGNAL
8	DC COM
GRN/YEL	GND

## TOOL-SIDE CONNECTOR: 1 MODULE CONTROLLER

- Side Entry hood that can be configured to have cables exit either side
- 23" of communication cable exiting to connect to Module Controller
- 24VDC cable cut to length to connect to Module Controller
- 120VAC cable cut to length to connect to Module Controller



OR



## TOOL-SIDE CONNECTOR: 2-6 MODULE CONTROLLERS

- Din rail mounted
- Connector can be din rail mounted on the bottom or either side of the connector
- 18" of communication cable exiting to connect to Module Controller
- 24VDC cable cut to length to connect to Module